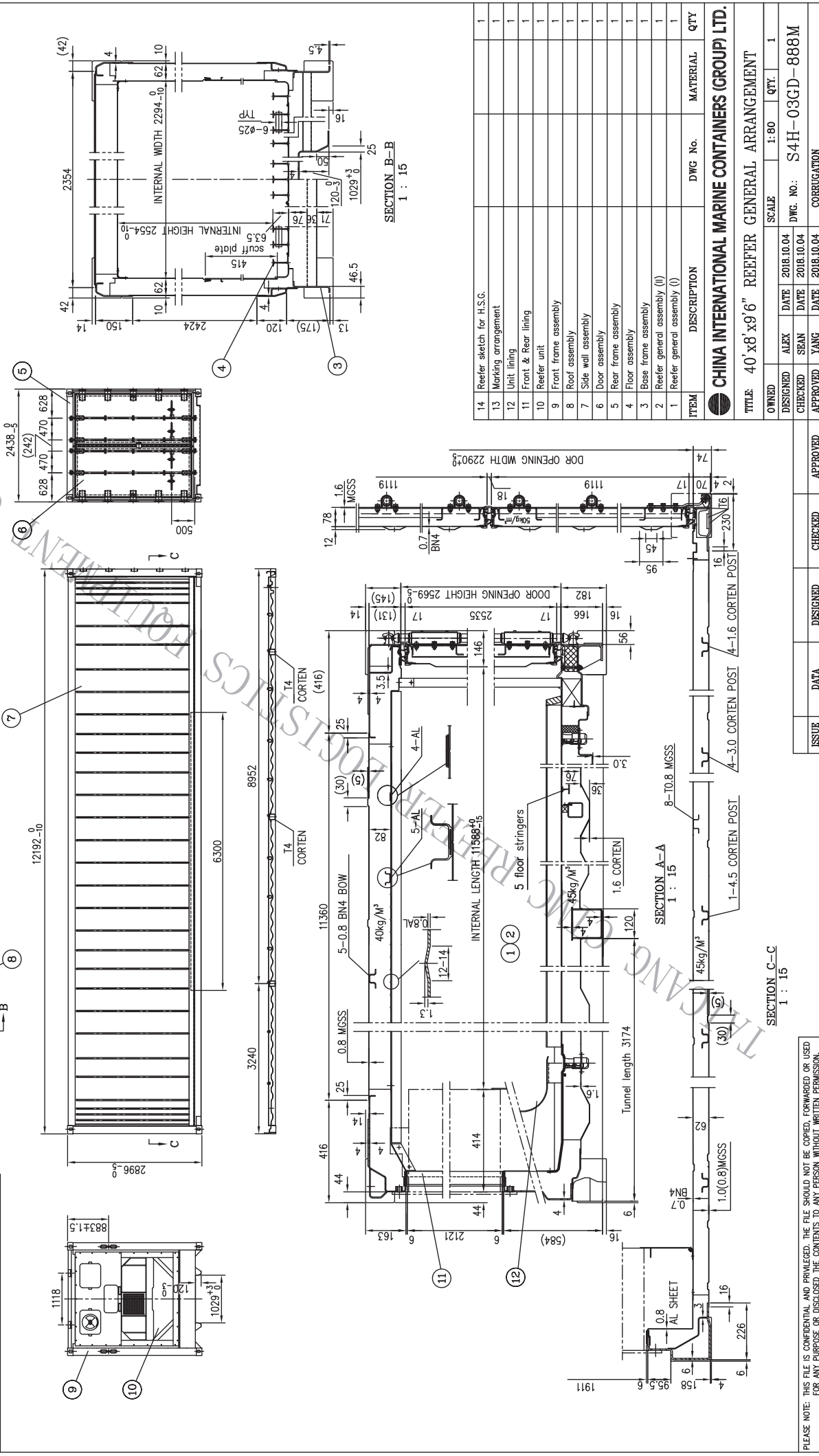


MAX GROSS WEIGHT	34000	KG	74960	LBS
TARE WEIGHT	EXCLUDING UNIT	4200	KG	9260
	INCLUDING UNIT (UNIT: 500KG)	4700	KG	10360
MAX PAYLOAD	UNIT: 500KG	29300	KG	64600
STACKING TEST LOAD		97200	KG	214290
FLOOR STRENGTH		7260	KG	16000
HEAT LEAKAGE (283K M.W.T.)		39	kcal/hr.c	86 B.T.U./hr.F
AIR LEAKAGE (1" WGP)		5	C.U.M./hr.	177 CU.FT./hr.

CLASSIFICATION	DIMENSION		INTERNAL CUBIC CAPACITY
EXTERNAL	LENGTH	12192 <sup>+0</sup> <sub>-10</sub>	40'
	WIDTH	2438 <sup>+0</sup> <sub>-5</sub>	8' - 25/64"
	HEIGHT	2896 <sup>+0</sup> <sub>-5</sub>	9' - 6"
INTERNAL	LENGTH	11588 <sup>+0</sup> <sub>-15</sub>	38' - 7/32"
	WIDTH	2294 <sup>+0</sup> <sub>-10</sub>	7' - 6 5/16"
	HEIGHT	2554 <sup>+0</sup> <sub>-10</sub>	8' - 4 35/64"
DOOR	WIDTH	2290 <sup>+0</sup> <sub>-5</sub>	7' - 6 5/32"
	HEIGHT	2589 <sup>+0</sup> <sub>-5</sub>	8' - 5 9/64"
CARGO ACCESS HEIGHT (UNDER LOAD LINE)		2446 <sup>+0</sup> <sub>-5</sub>	8' - 19/64"
INTERNAL CUBIC CAPACITY		67.9	CU.M
			2397
			CU.FT



ITEM	DESCRIPTION	DWG No.	MATERIAL	QTY
14	Reefer sketch for H.S.G.			1
13	Marking arrangement			1
12	Unit lining			1
11	Front & Rear lining			1
10	Reefer unit			1
9	Front frame assembly			1
8	Roof assembly			1
7	Side wall assembly			1
6	Door assembly			1
5	Rear frame assembly			1
4	Floor assembly			1
3	Base frame assembly			1
2	Reefer general assembly (I)			1
1	Reefer general assembly (II)			1

<b>CHINA INTERNATIONAL MARINE CONTAINERS (GROUP) LTD.</b>			
TITLE: 40' x 8' x 9' 6" REEFER GENERAL ARRANGEMENT			
OWNED	SCALE	1:80	QTY: 1
DESIGNED	DATE	2018.10.04	DWG. NO.: S4H-03GD-888M
CHECKED	DATE	2018.10.04	
APPROVED	DATE	2018.10.04	CORROGATION

PLEASE NOTE: THIS FILE IS CONFIDENTIAL AND PRIVILEGED. THE FILE SHOULD NOT BE COPIED, FORWARDED OR USED FOR ANY PURPOSE OR DISCLOSED THE CONTENTS TO ANY PERSON WITHOUT WRITTEN PERMISSION.